

THE WESTIN GOVERNOR MORRIS

Located in the heart of Morristown just moments from numerous Fortune 500 companies and 40 minutes from New York City, The Westin Governor Morris offers the perfect setting for your meeting or event. With our top-of-the-line service and state-of-the-art amenities, we are the ideal choice for conferences, meetings and events in Morristown.

Hotel At a Glance

Year Opened: 1964
 Last Renovated: 2011
 Guest Rooms: 224
 Kings 102 / Suites 24 / Queens 17 / Doubles 81
 Room Rates: From \$149 - \$429
 Ideal Group Size: 350
 Max Group Size: 500

Meeting Space

16 meeting rooms ranging from
 308 sq. ft. to 7465 sq. ft.

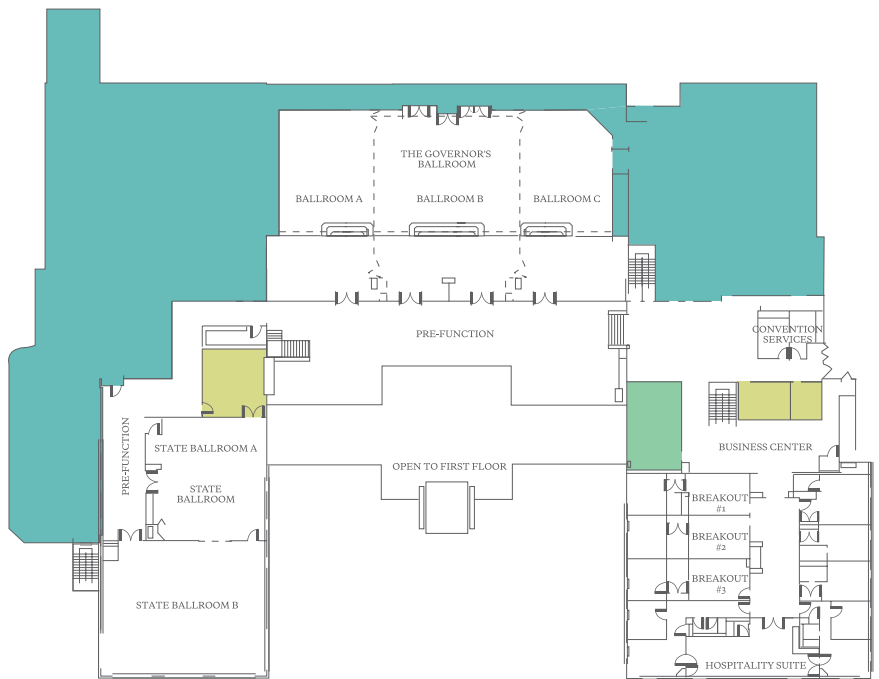
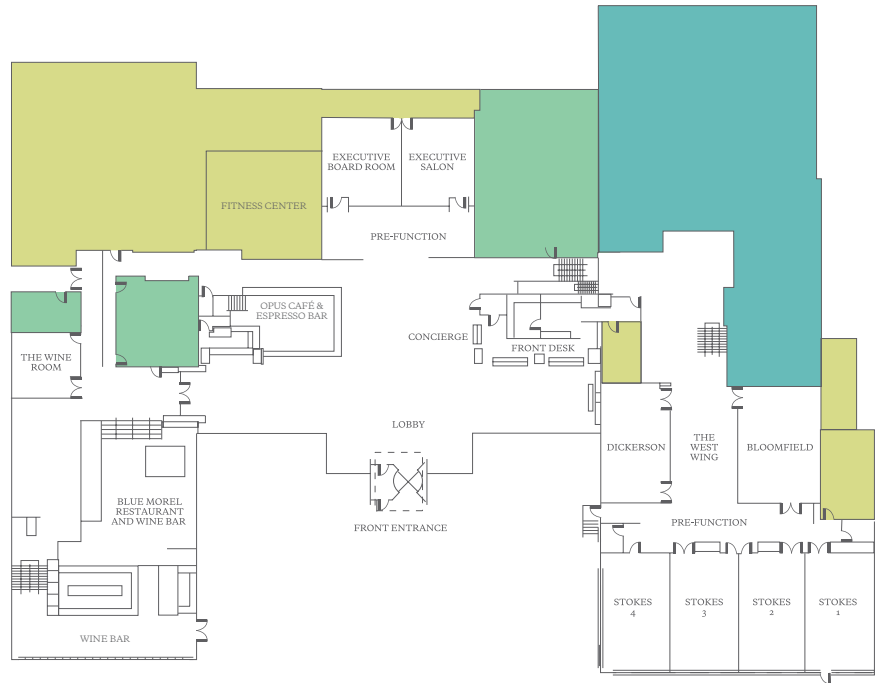
Amenities

24-hour business center
 In-house audio visual company
 Catering and convention services
 Dedicated event planners
 Large in-room workspaces
 WiFi available in all guest rooms & public space
 Renowned Starwood SPG® Pro Program
 Onsite transportation company

LEARN MORE BY VISITING
WESTINGOVERNORMORRIS.COM

2 Whippany Road Morristown, NJ, 07960
 T 973-539-7300

THE WESTIN
 GOVERNOR MORRIS
 MORRISTOWN



spg*
 Starwood
 Preferred
 Guest

MERIDIEN

loft

FOUR
 POINTS

WESTIN

THE LUXURY
 COLLECTION

W
 HOTELS

Sheraton

ST REGIS

element

THE WESTIN GOVERNOR MORRIS

CAPACITY CHART

Room Name	Dim (1xw)	Area	Height	Banq.	Thtr.	Conf.	Rec.	Class	U-Shp.
FIRST FLOOR									
Boardroom Pre-Function	-	690ft ²	8.0'	-	-	-	-	-	-
Executive Boardroom	25.6' x 23.6'	600ft ²	8.0'	-	-	20	-	-	-
Executive Salon	25.6' x 21.6'	548ft ²	8.0'	-	-	-	-	-	-
SECOND FLOOR									
The Governor's Ballroom	64.0' x 116.0'	7,465ft ²	13.6'	400	700	-	700	300	-
Ballroom Pre-Function	22.0' x 120.0'	3,640ft ²	-	-	-	-	-	-	-
Ballroom A	64.0' x 32.0'	2,026ft ²	-	72	60	-	125	40	-
Lower Level	42.0' x 48.0'	2,016ft ²	13.6'	120	200	50	150	100	50
Upper Level	22.0' x 31.0'	682ft ²	10.0'	30	30	-	35	25	-
Ballroom B	64.0' x 48.0'	3,094ft ²	-	160	300	50	250	85	50
Lower Level	42.0' x 31.0'	1,290ft ²	-	110	150	40	140	100	50
Upper Level	22.0' x 48.0'	1,056ft ²	10.0'	40	100	-	100	50	-
Ballroom C	64.0' x 36.0'	2,346ft ²	-	108	135	25	175	125	75
Lower Level	42.0' x 32.0'	1,344ft ²	13.6'	110	100	30	140	40	30
Upper Level	22.0' x 36.0'	792ft ²	-	40	50	15	35	25	15
The State Ballroom	-	3,890ft ²	10.0'	275	400	-	350	200	-
State Ballroom A	42.0' x 35.0'	1,470ft ²	10.0'	90	90	35	120	81	30
State Ballroom B	44.0' x 55.0'	2,420ft ²	10.0'	190	200	40	200	54	40
Pre-Function	-	673ft ²	-	-	-	-	-	-	-
Breakout #1 (Conf. Suite)	14.0' x 22.0'	308ft ²	8.6'	-	15	12	-	-	-
Breakout #2 (Conf. Suite)	16.0' x 22.0'	352ft ²	8.6'	25	15	12	-	-	-
Breakout #3 (Conf. Suite)	14.0' x 22.0'	308ft ²	8.6'	20	15	12	-	-	-
Hospitality Suite	19.0' x 44.0'	728ft ²	8.6'	-	-	-	-	-	-
THE WEST WING									
Bloomfield	34.0' x 24.0'	820ft ²	8.0'	60	80	26	90	30	27
Dickerson	20.0' x 34.0'	680ft ²	8.6'	48	65	21	60	33	27
Stokes 1	38.0' x 20.0'	760ft ²	9.0'	60	80	26	80	33	27
Stokes 2	38.0' x 20.0'	760ft ²	9.0'	60	80	26	80	33	27
Stokes 3	38.0' x 20.0'	760ft ²	9.0'	60	80	26	80	33	27
Stokes 4	38.0' x 20.0'	760ft ²	9.0'	60	80	26	80	33	27
Conference Pre-Function	-	1,200ft ²	8.6'	-	-	-	125	-	-
The Wine Room	21.0' x 21.0'	360ft ²	8.6'	-	-	10	-	-	-